

## Surface Mount Bollard Slider Removable Key Lock



Keys Supplied

**12 MONTHS**  
WARRANTY

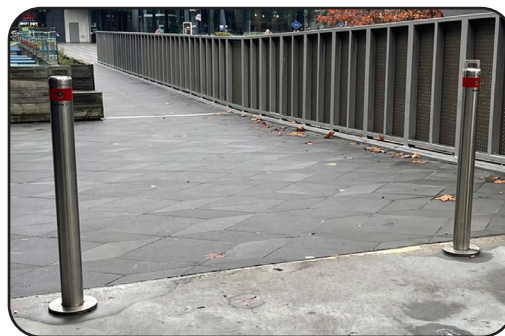
### Tools Required:

- Hammer drill with correct sized drill bit
- Countersunk fixings
- A hand broom or industrial vacuum

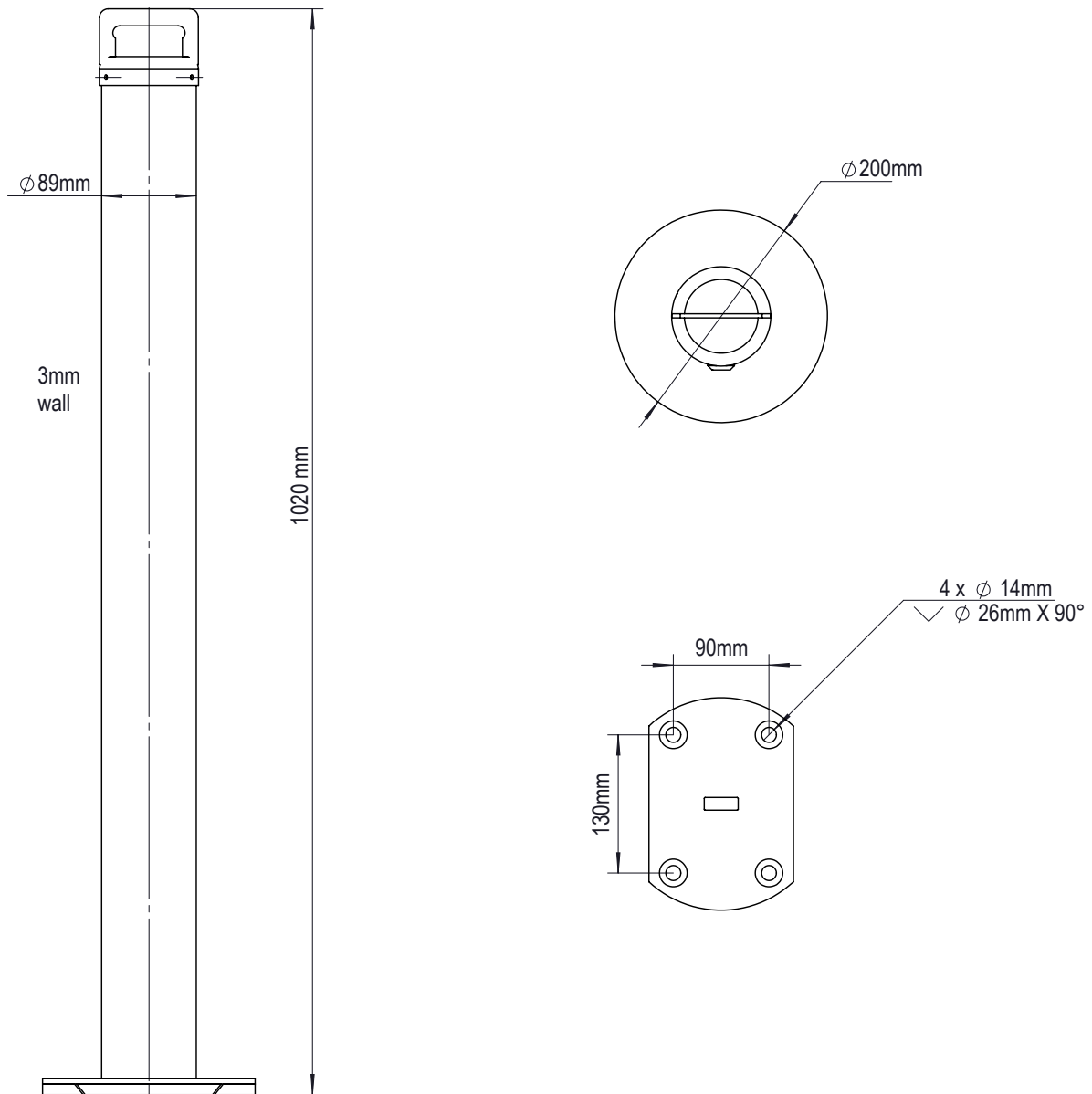
### Installation:

1. Read installation guide from beginning to end.
2. Determine exactly where the bollard will be placed. If you are installing more than one bollard, mark the ground to ensure that you have a straight line first.
3. Take the slider receiver plate, drill a guide hole in the surface, This is to mark the surface so that you know where to continue to drill. Continue to drill each guide hole to almost the entire length of your fixings.
4. Remove the slider plate and brush or vacuum away any dust.
6. Secure bollard receiver plate into fixing holes with countersunk fixings.
8. Slide your bollard in / out of slider receiver plate to test a couple of time. Lock into place using keys provided. Do not force open or turn keys the wrong way to avoid any possible damage.

Specifications	
<b>SKU</b>	REMBOLSLID (keyed alike) REMBOLSLIDSS (keyed alike ss) REMBOLSLIDU (unique lock) REMBOLSLIDB (black unique lock)
<b>Material</b>	Hot Dip Galvanised Steel
<b>Colour</b>	Powder Coated Yellow / Black or Stainless Steel with Class 1 Red Reflective Tape
<b>Dimensions:</b>	<b>Height:</b> 1020mm <b>Diameter:</b> 90mm (Pole) 200mm (Base) <b>Wall Thickness:</b> 3mm <b>Base:</b> 4 Mounting Holes
<b>Keys</b>	2 x keys provided
<b>Item Weight</b>	13kg
<b>Fixings</b>	4 x FREE Countersunk Mounting Bolts Included per bollard (standard fixings kit)



## ***Technical Drawing***



## ***90mm Slider Removable Bollard***

