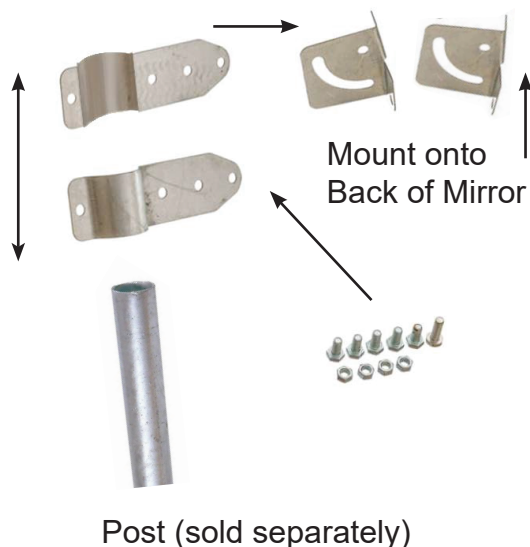


## Convex Mirror Post Mount Instructions

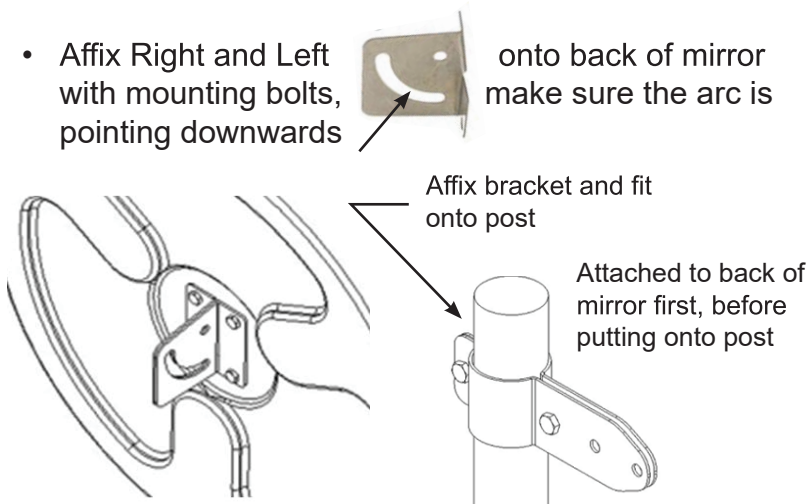
| Specifications |                             |
|----------------|-----------------------------|
| SKU            | CONMIRPOSTB                 |
| Material       | Zinc Plated Steel           |
| Size           | 60mm clamp                  |
| Viewing Angle  | Adjustable Angle            |
| Fixings        | Post mount fixings included |

### Post Mount Bracket Included With Convex Mirror Purchase

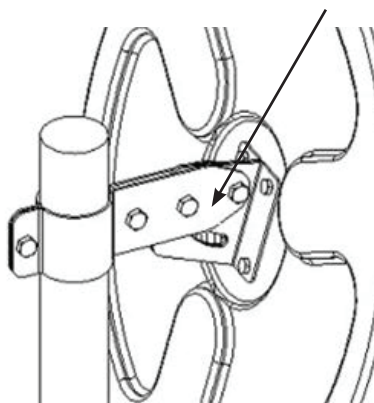


## Installation Guide

- Affix Right and Left with mounting bolts, pointing downwards onto back of mirror make sure the arc is



- Mount the mirror (with back mount arc bracket already attached) onto the post mount bracket, fit onto post, tighten brackets using M8 screws.
- Adjust arc to position mirror at desired angle, tighten with screws.



Remove protective film before use.

**Care Instruction:** clean with soft / dampend cloth only, dry with cotton cloth or soft tissue.  
Only dampen cloth with water, air dry. **DO NOT** use any chemical or amonia on mirror surface.

