

## Container Access Ramp

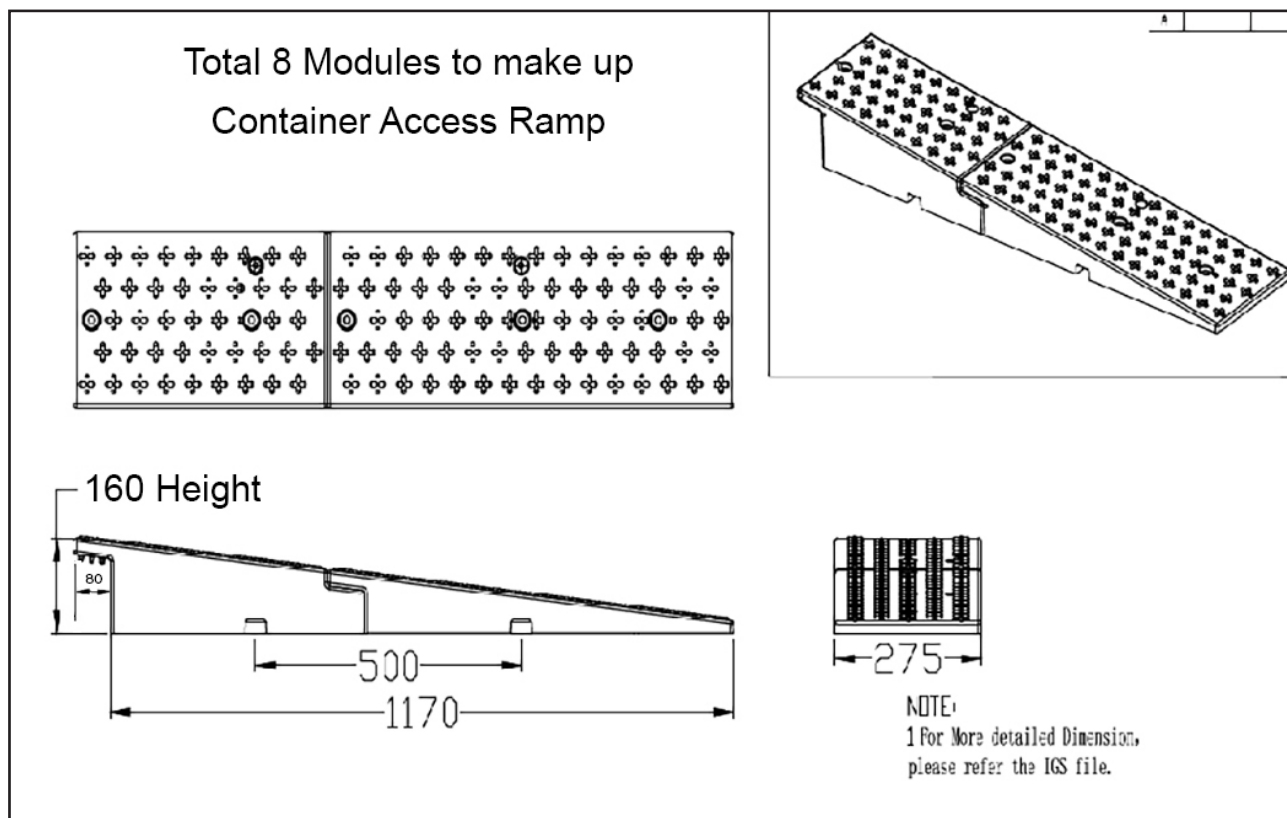
| Specifications          |   |
|-------------------------|---|
| SKU                     | CONRAMP   |
| Material                | Recycled Rubber                                   |
| Colour                  | Black   |
| Components:             | 8 modules<br>(2 pc per module)<br>Total 16 pieces |
| Dimensions (assembled): | Width: 2200mm<br>Depth: 1250mm<br>Height: 160mm   |
| Item Weight             | 210kg   |
| Load Capacity           | 20 Tonne  |

## Product Features

- Can be quickly and easily assembled by 1 person using supplied bone connectors to link modules together to form the complete ramp.
- Designed to allow access to standard shipping containers at ground level
- Made from recycled rubber, ant-slip surface
- Durable, 20 tonne load capacity to suit standard industrial operations

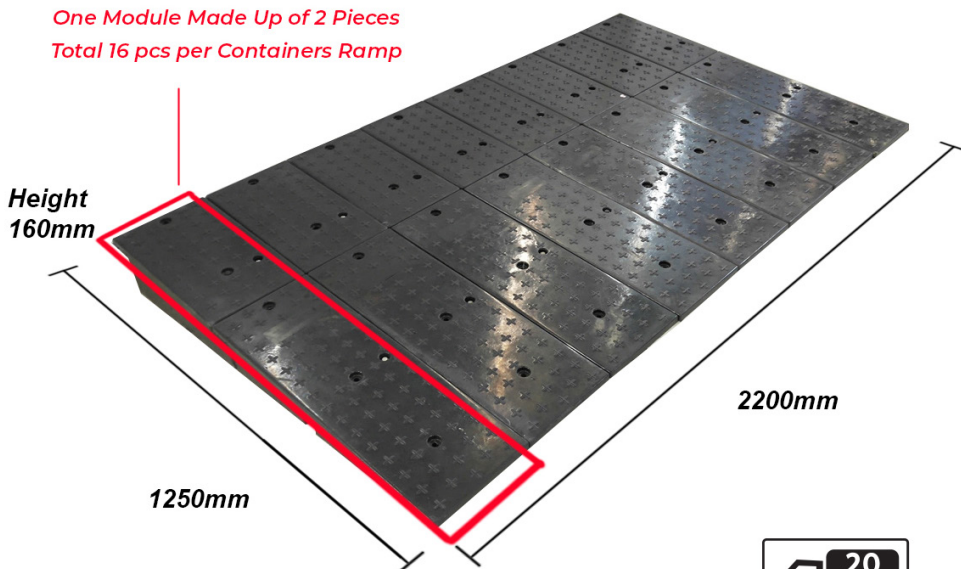


## Technical Drawing



### Container Access Ramp

One Module Made Up of 2 Pieces  
Total 16 pcs per Containers Ramp



Load Capacity

