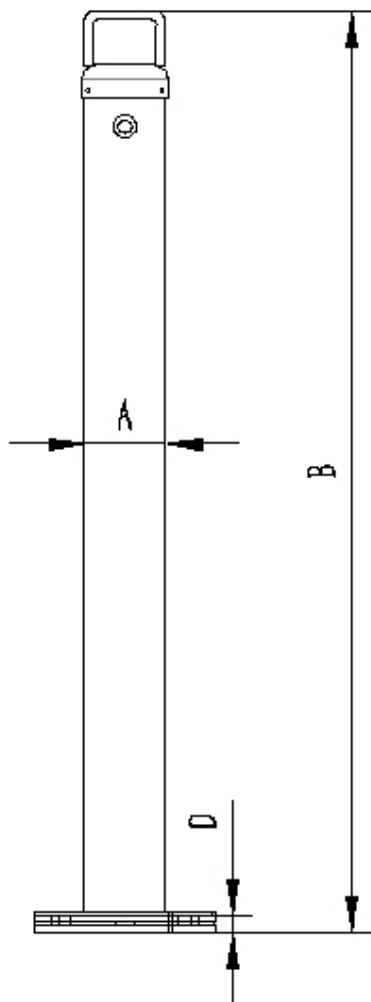




Removable Surface Mount Twist Type Bollard

Specifications	
SKU	REMBOLSMU (Unique Lock) - Yellow REMBOLSMKA (Keyed Alike) - Yellow REMBOLSMKAB (Keyed Alike) - Black
Material	Hot Dip Galvanised Steel Powder Coated with Class 1 Reflective Tape
Dimensions:	Height: 1200mm Diameter: 90mm (Pole) 200mm (Base) Wall Thickness: 3mm Base: 4 Mounting Holes
Item Weight	13kg
Fixings	4 x FREE M10 Coach Screws 100mm, washers and nylon plugs Included per bollard (standard fixings kit)



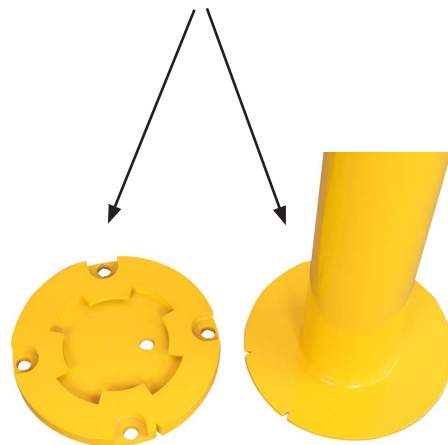
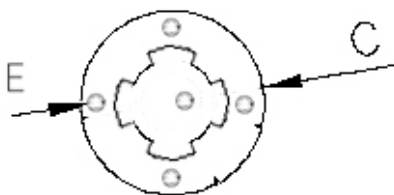
Technical Drawing

Surface Mount
Twist Type Bollard

A: 900mm Dia.
B: 1200mm Overall Height

Base Plate:
C: 200mm Dia.
D: 18mm Thickness
E: 8mm Fixing Hole Dia.

Extra Base Plates
(SKU: TBOLREC) are
available for purchase,
this is handy when
bollards need to be
removed and mounted
at different locations.



Tools Required:

- Hammer drill with correct sized drill bit
- Fixing kit
- The correct sized socket
- A hammer
- A hand broom or industrial vacuum

Installation:

1. Read instruction steps from beginning to end.
2. Determine exactly where the bollard will be placed. If you are installing more than one base plate, it is a good idea to mark the ground to ensure that you have a straight line to assist you with the correct placement of your bollards.
3. Using your hammer drill, drill a guide hole in the surface, through each hole in the bollard using the drill bit. (This is to mark the surface so that you know where to continue to drill).
4. Remove the bollard base plate and brush or vacuum away the dust.
5. Continue to drill each guide hole to almost the entire length of your fixings.
6. If you are using a plastic plug component, put it in the drilled hole and hammer in.
7. Place the base plate over the holes, line up and place your fixing in the holes and screw or hammer in.
8. Use your socket to tighten the screw if applicable. Be careful not to over tighten.



**Base Plate
Installation**

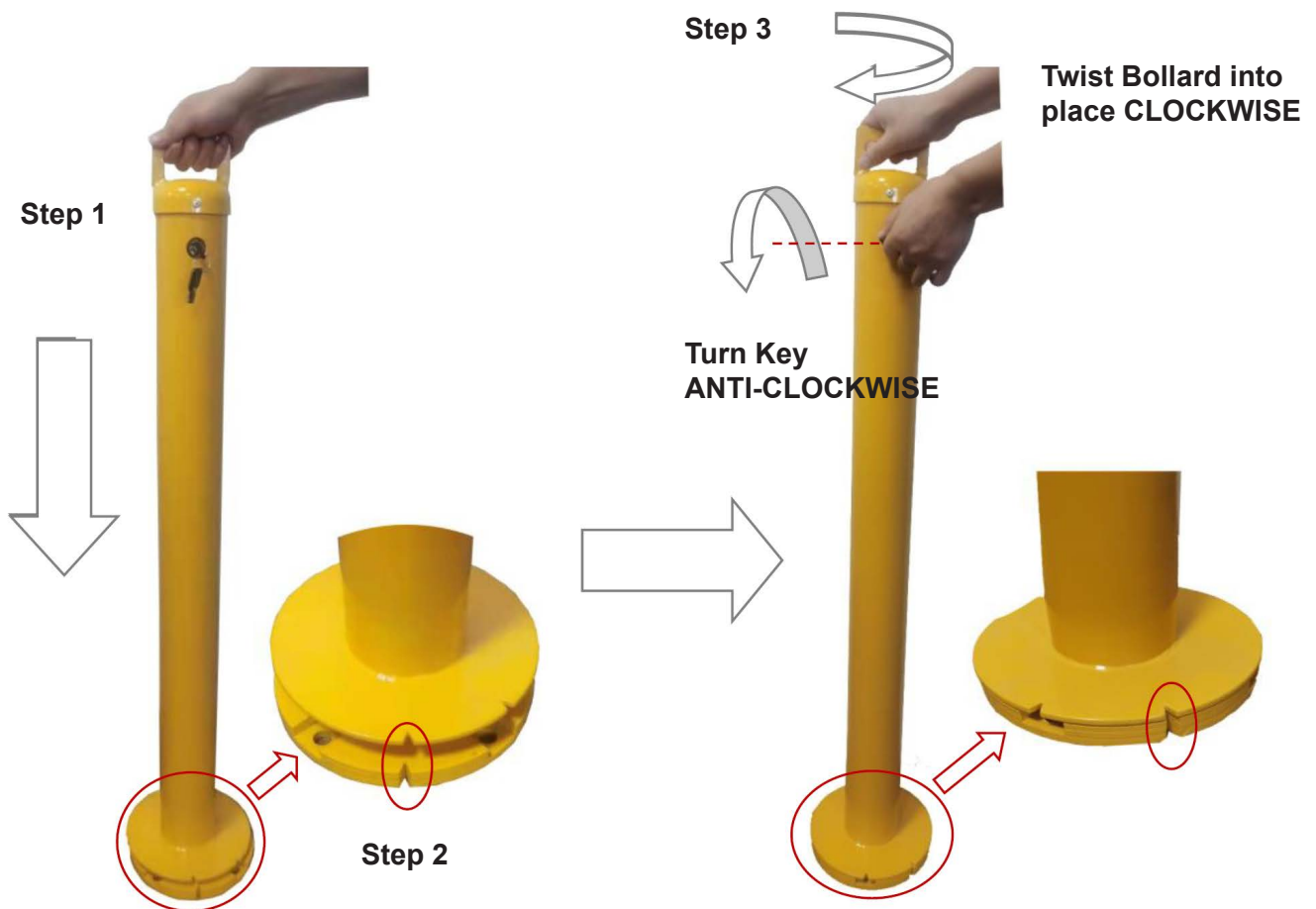
**Note: Refer to
next page on
how to remove
bollard from
base plate**



Removable Surface Mount - Twist Type Bollard

How To Attach Bollard To Base Plate

1. Put the key into lock barrel, while lifting the bollard by its handle so it sits directly ontop of the base plate
2. Match the triangular cut on bollard to triangular cut on base plate
3. Once lined up, gently turn the key anti-clockwise (and hold the key so lock stays open), while turning the bollard clock-wise to secure bollard into place.
4. Release the key and take the key out from the lock barrel.
5. Your Removable Surface Mount Twist Type Bollard is now securely installed onto base plate.



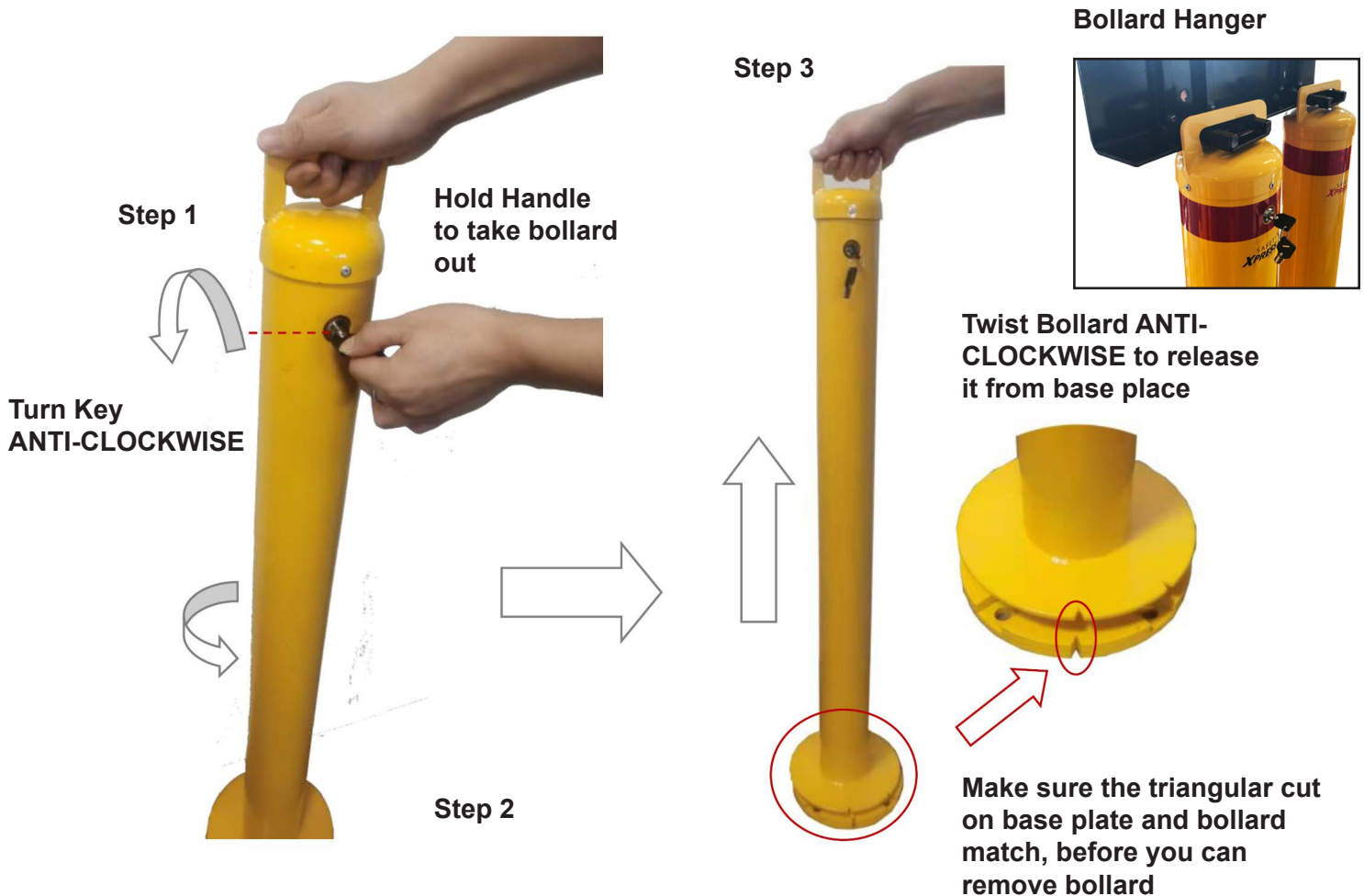
Surface Mount Twist Type Bollard

Note: DO NOT turn key by force the wrong direction as this may damage the lock mechanism

Removable Surface Mount - Twist Type Bollard

How To Remove Bollard From Base Plate (To Allow Vehicle Access)

1. Put the key into lock barrel, gently twist it anti-clockwise. Make sure you hold the key down in place with one hand (so it is not locked), while holding the bollard handle with another hand.
2. Twist the bollard handle anti-clockwise so the triangular cuts on base plate and bollard base match
3. Once lined up, gently lift the bollard out of the base.
4. Store your bollard in a safe place while allowing vehicle access. eg. you can put the bollard onto another base plate located elsewhere, OR you can purchase bollard hangers to store bollard when not in use



Surface Mount Twist Type Bollard

Note: DO NOT turn key by force the wrong direction as this may damage the lock mechanism