

## Solar Powered LED Bollard

| Specifications |  |
|----------------|--|
| SKU            | BOLSM90SSLED   |
| Material       | 304 Grade Stainless Steel  |
| Colour         | Silver with Blue LED strip   |
| Dimensions:    | Height: 1000mm<br>Pole Diameter: 90mm<br>Base Diameter: 170mm<br>Wall Thickness: 3mm |
| Item Weight    | 20kg   |
| Fixings        | 4 x Mounting Screws Include  |



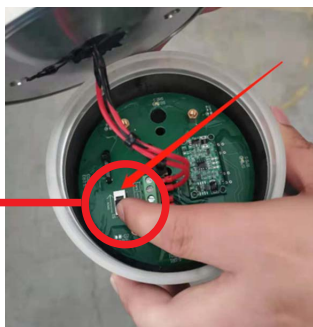
## Initial Set-Up

1. Use M5 Hex Key (not supplied) to open bollard cap. Open the cap and you will see as per picture.



2. You will need to Turn ON the bollard

Red circle is the button, which you will need to manually switch ON.



3. Gently close the cap, without tightening the screws, and run below test:

4. Cover the top of bollard with your hand, preferably in a place that is dimly lit, now the LED strip should light up with blue light as shown in picture.



5. After following above steps and making sure the LED Solar Powered Bollard can light up, you can now tighten the screws close the cap.

Light conditions during the day will affect LED brightness at night. 8hr full sun exposure will give 10hrs of LED at night. Insufficient light during the day will not give LED full charge.

### Not sure how to mount to surface?

Click link here to view

[Installation Guide - Bollard Surface Mount](#)

OR

Go to our website

[www.safetyxpress.com.au/installation-guides](http://www.safetyxpress.com.au/installation-guides)

and choose [Installation Guide - Bollard Surface Mount](#)

