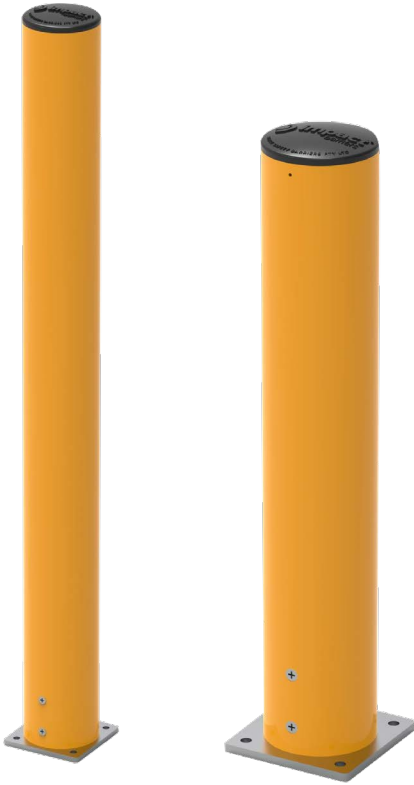


**Surface Mount Poly Bollard
Heavy Duty**



BOLSMPOLY110

BOLSMPOLY200



Specifications	
SKU	BOLSMPOLY110
Material	Heavy Duty Polymer
Colour	Safety Yellow with Black Cap
Dimensions:	Height: 1125mm Diameter: 110mm (Pole O.D) Base: 150mm square x 10mm
Item Weight	10kg
Fixings	4 of M16 x 105mm through bolts (standard fixings)

Specifications	
SKU	BOLSMPOLY200
Material	Heavy Duty Polymer
Colour	Safety Yellow with Black Cap
Dimensions:	Height: 1125mm Diameter: 200mm (Pole O.D) Base: 250mm square x 12mm
Item Weight	24kg
Fixings	4 of M16 x 105mm through bolts (standard fixings)

Assembly & Installation:

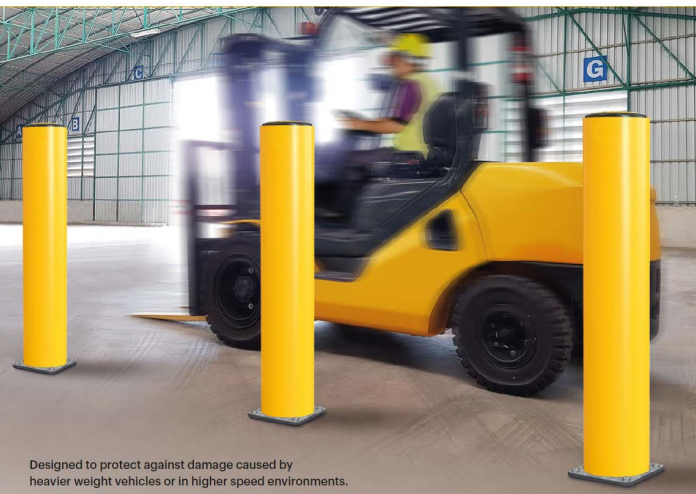
These heavy duty impact polymer bollards are especially designed to reduce ongoing maintenance cost of damaged barrier replacement and floor repairs in high traffic industrial facilities

Impact polymer bollards are designed to be fixed directly onto concrete surfacing

Offering the same strength as steel, designed to flex and absorb impact, returns to original form upon impact.

Hygienic, non-corroding, water resistant, scratch resistant. UV stabilised, low maintenance

Base Plate Spigot comes fully assembled, simply bolt down to surface



Designed to protect against damage caused by heavier weight vehicles or in higher speed environments.

