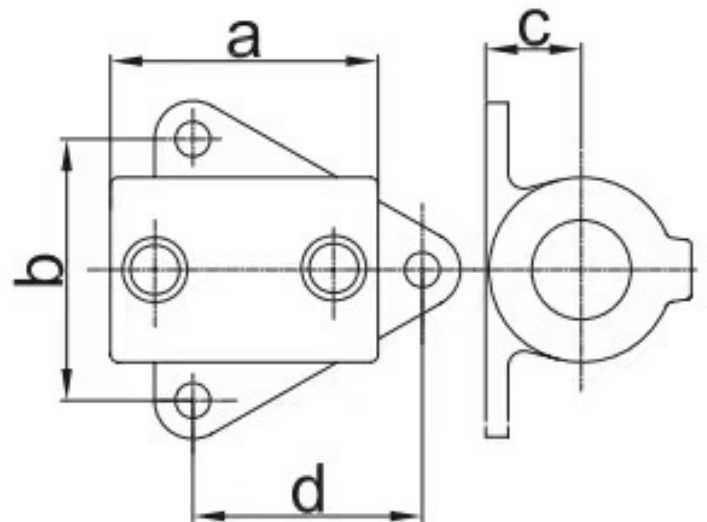


**PRODUCT INFORMATION**

**Ezyrail 146 - Side Palm Fixing**



Specifications	
SKU:	EZY146
Description:	Ezyrail - 146 Side Palm Fixing
Material:	Hot dipped galvanised cast iron
Suitable Applications:	Suits Diameter 48mm O/D (40 NB)



**EZYRAIL FEATURES:**

- No welding required
- Easy assembly using an impact drill / hex key
- Strong and sturdy, all weather proof
- Build to desired height and length
- Individual components or pre-assembled stanchions can be purchased for easy self assembly
- Custom design / custom colour available
- Suitable for: car parks, warehouses, factories, disability access, shopping centres, foot bridges, roof railings, pathways etc.

Type (mm)	DIMENSIONS (mm)			
	a	b	c	d
48.3	89	86	31	78