

Loading Dock Boom Gate

Specifications	
SKU	BGATELDLEFT (left) BGATELDRIGHT (right)
Length	3m (2.6m Between Center of Posts)
Height	1000mm (lowered) 3595mm (raised)
Material	Galvanised Steel
Colour	Powder Coated Safety Yellow
Item Weight	50kg

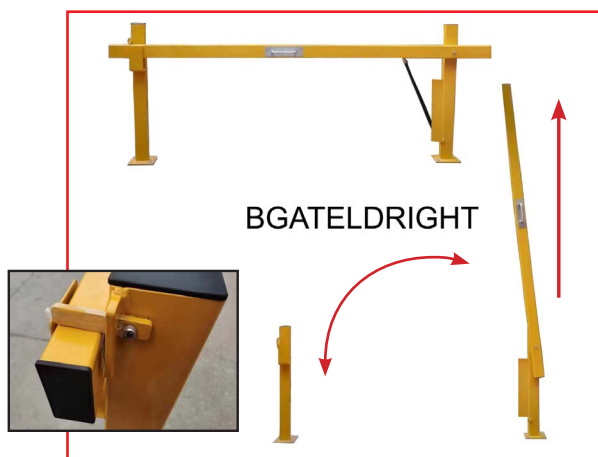
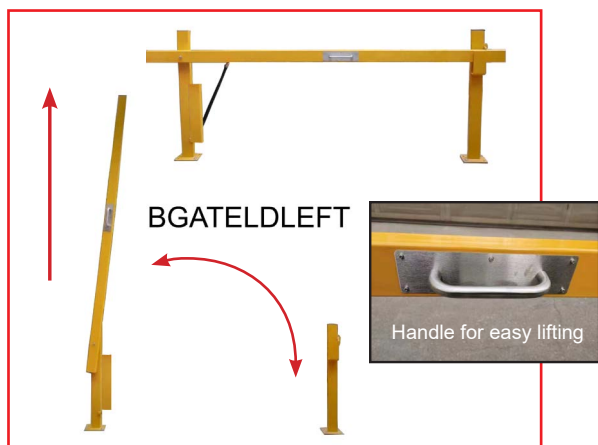
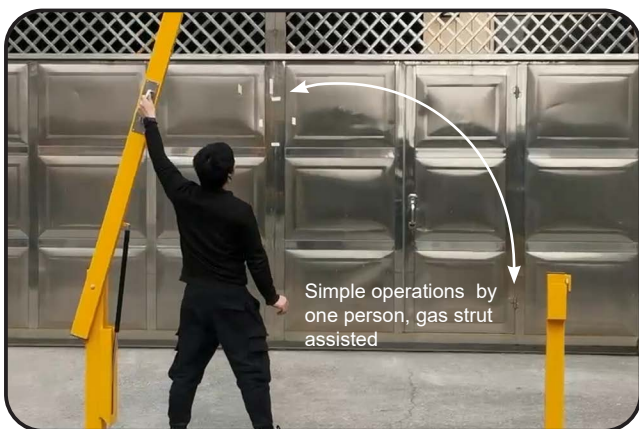
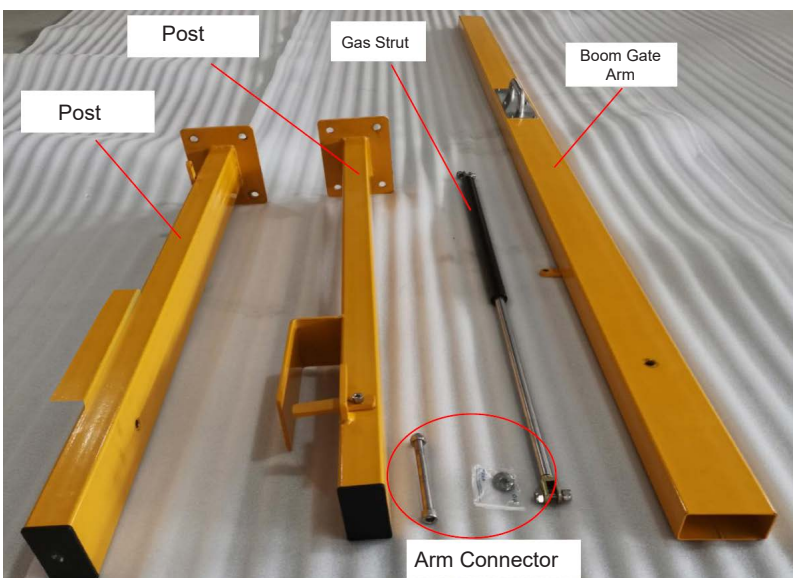
Product Features

- Often used at warehouse loading docks
- Requires simply self assembly
- 1 person to manually operate, gas strut assisted, make it a simple operation by lifting handle.
- When loading is in progress the boom gate can act as a safety barrier
- When access is required the boom can simply be released and put into a vertical position

Parts List	
Post	2 pcs
Arm	1 pc
Gas Strut	1 pc
Arm Connector	1 pc
M10* 100 Bolts	8 pcs

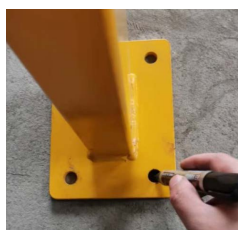
Tools Required (not supplied)

- Drill
- Spanner
- Marker Pen
- Allen Key #8



Prior to installation, please check all parts listed on page 1 are included and present in your package

Please read installation guide from beginning to end before commencing installation work.



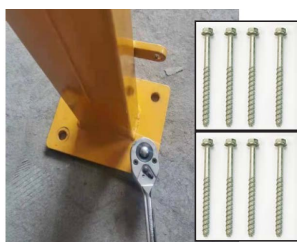
Step 1:
Mark installation points



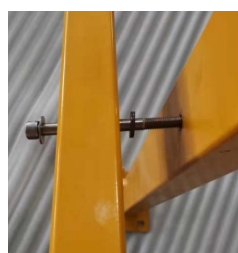
Connector and washers
for arm installation



Step 2:
Measure and bolt down posts



8pcs M10*100
screws anchor
included



Step 3:
Put arm connector through arm
and post as per drawing above



Step 4:
Tighten using hex key and
spanner



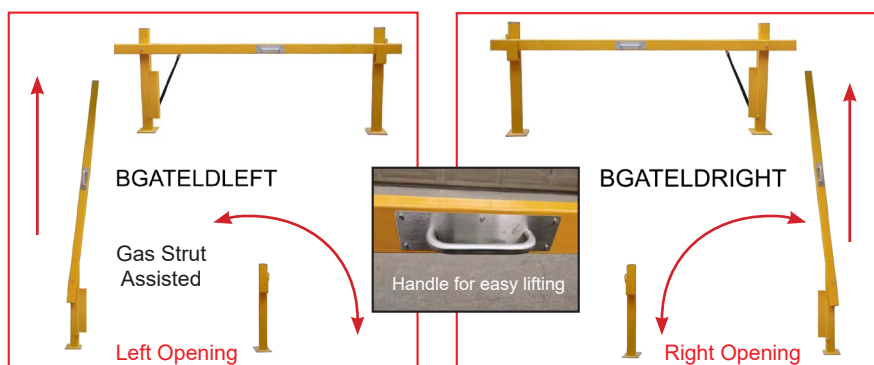
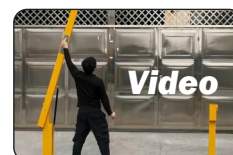
Step 5: Gas strut installation



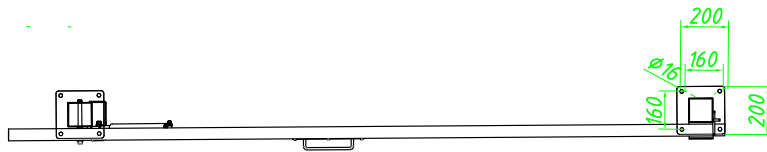
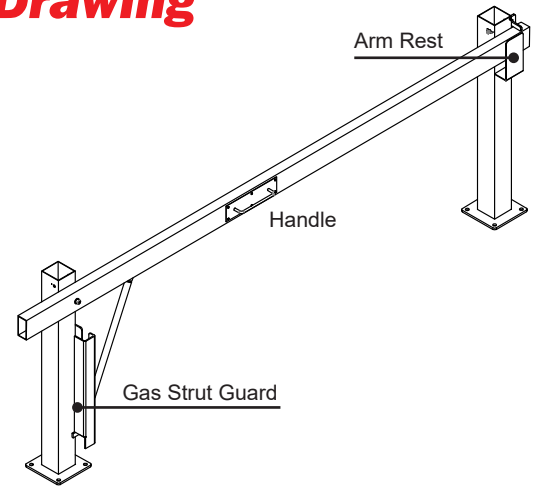
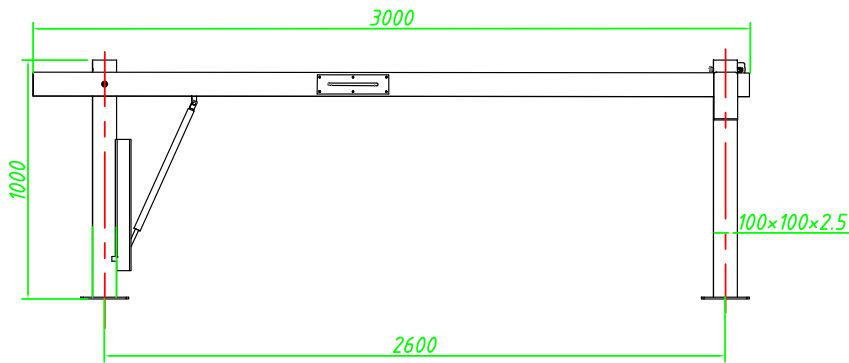
Installation Steps:

1. Measure and mark the distance between centre of posts according to tech drawing on page 3. Posts should have arm rest / gas strut guard facing operator.
2. Use a marker pen to mark the position where you want to install the posts. Remove the posts, and drill holes at where you have marked, put posts back and install with fixings. 8pcs of M10* 100mm concrete screws anchor provided, we recommend using Bosch 10mm SDS Masonry Drill Bit to drill into concrete surfaces ([sold separately HERE](#))
3. Arm with handle should have handle side facing operator. Arm connector come with washers (refer to photo). When installing boom gate arm, put the connector through arm and post as per photo on left, e.g. need to be in below sequence: washer > arm > bearing > post > locknut
4. Tighten the above using #8 hex key and #19 spanner
5. Gas strut installation, using the nuts and bolts provided to attached end of gas strut metal end to bottom of post, you should see a protruding attachment plate at bottom of one of the posts, below gas strut guard
6. Once above steps are completed, double check all nuts and bolts have been tightened and all components are secured in place.
7. Manually lift up / down boom gate to test if boom is functioning properly. Holding the handle, gently lower boom gate into closed position. To open boom gate, gently push the arm down a little then release, the gas strut will put boom gate arm into vertical position.

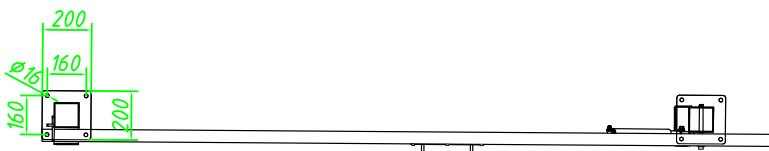
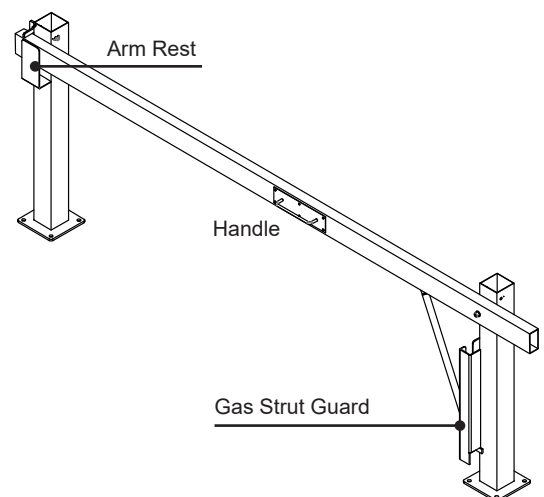
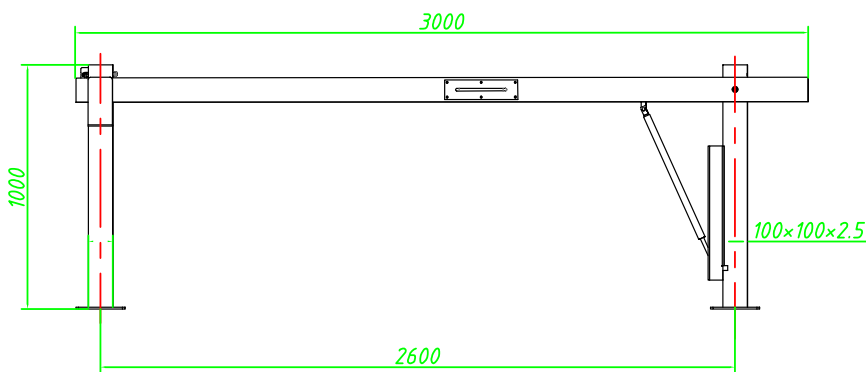
[View operation video HERE](#)



Boom Gate Technical Drawing



BGATELEFT

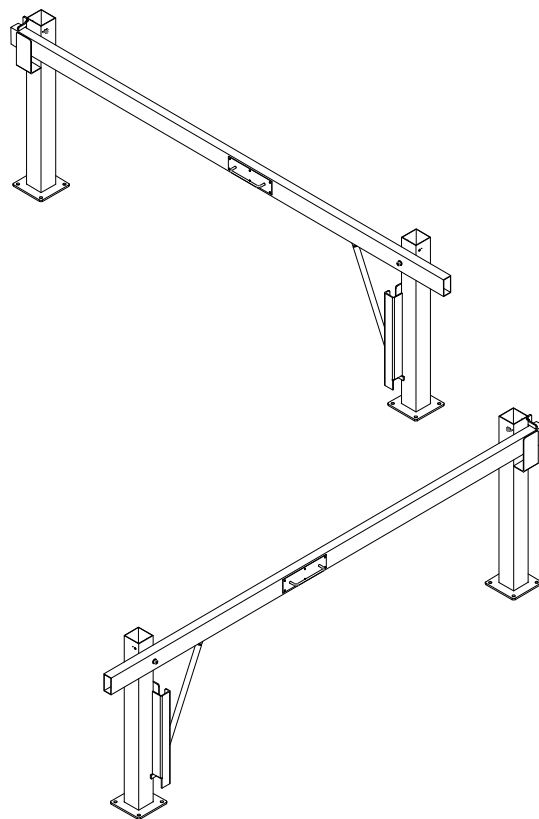
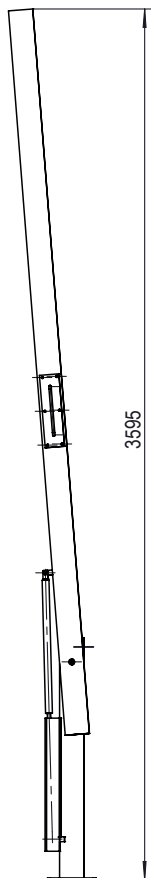


BGATELDRIGHT

Raised Height

BGATELDLEFT

BGATELDRIGHT



Need Installation Service?

Sure, No Worries!

We do offer installation services in selected areas.

Please contact us on **1300 049 246** or email **sales@safetyxpress.com.au** for a quote

