



Surface Mount Bollard

Specifications	
SKU	BOLSM90GALV
Material	Hot Dip Galvanised Steel
Colour	Silver body with Class 1 Red Reflective Tape
Dimensions:	Height: 1200mm Diameter: 90mm (Pole) 225mm (Base) Wall Thickness: 3mm Base: 4 Mounting Holes 16mm each in Diameter
Item Weight	9kg
Fixings	4 x FREE Mounting Bolts Included per bollard (standard fixings kit)

Tools Required:

- Hammer drill with 14mm drill bit for M10 coach screw 100mm, or 10mm drill bit for M10 concrete screw anchors
- Fixing kit (M10 coach screws 100mm, or 60mm M10 concrete screw anchors, or 100mm M10 concrete screw anchors)
- The correct sized socket
- A hammer
- A hand broom or industrial vacuum

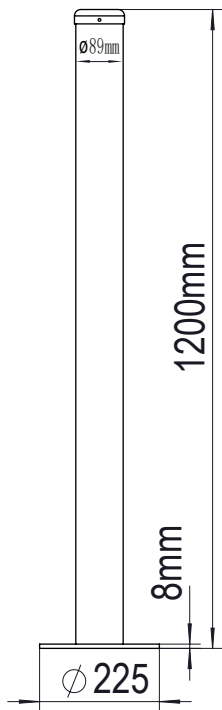


Installation:

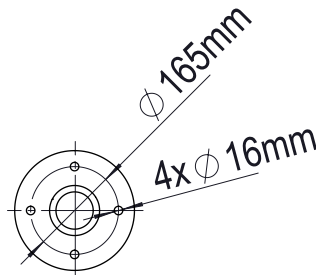
1. Read all instruction steps from beginning to end.
2. Determine exactly where the bollard will be placed. If you are installing more than one bollard, it is a good idea to mark the ground to ensure that you have a straight line to assist you with the correct placement of your bollards.
3. Using your hammer drill, drill a guide hole in the surface, through each hole in the bollard using the drill bit. (This is to mark the surface so that you know where to continue to drill).
4. Remove the bollard and brush or vacuum away the dust.
5. Continue to drill each guide hole to almost the entire length of your fixings.
6. If you are using a plastic plug component, put it in the drilled hole and hammer in.
7. Place the bollard over the holes, line up and place your fixing in the holes and screw or hammer in.
8. Use your socket to tighten the screw if applicable. Be careful not to over tighten.



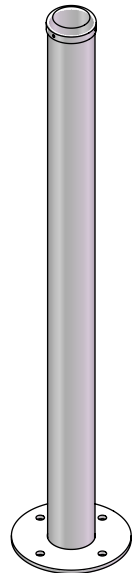
Technical Drawing



Front View



Top View



			Surface Mount 90mm x 1200mm Bollard Standard Fixing Kit included
			Finish Galvanised Steel, with Class 1 Red Reflective Tape and metal knock-on cap at top
version	scale	SKU	
1.1	A	1:6	BOLSM90GALV