



## **Fold Down Parking Protector Bollard 800mm - with Padlock**

<b>Specifications</b>	
<b>SKU</b>	FDBOL800PAD
<b>Material</b>	Galvanised Steel
<b>Colour</b>	Powder Coated Yellow with Class 1 Red Reflective Tape
<b>Dimensions:</b>	<b>Height:</b> 800mm (upright) 80mm (folded down) <b>Column:</b> 150mm x 50mm
<b>Item Weight</b>	11kg
<b>Pad Lock</b>	1 x Padlock with 2 Keys Included
<b>Stickers</b>	Options, at cost Sticker Text Option: NO PARKING, RESERVED, VISITOR
<b>Fixings</b>	FREE fixings 4pcs x M10 Coach Screws 100mm, washers and plugs. Concret screws (at cost) M10 60mm OR M10 100mm

### **Product Features:**

SafetyXpress Parking Spot Protector will stop any carpark pincher attempting to park in your spot.

This unit stands at 800mm high and folds flat to a low lying 80mm to ensure your car won't scrape it when it's not standing guard.

The Parking Protector Fold Down Bollard is easily locked in the upright position using the 2 keys supplied with the unit.

Powder coated in Safety Yellow means it's visibility you can't miss, and we even put a reflective strip around it so you can spot it even better at night.

### **Tools Required:**

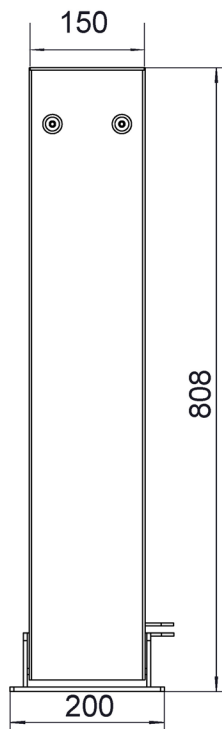
- Hammer drill with 14mm drill bit for M10 coach screw 100mm, or 10mm drill bit for M10 concrete screw anchors
- Fixing kit (M10 coach screws 100mm, or 60mm M10 concrete screw anchors, or 100mm M10 concrete screw anchors)
- The correct sized socket
- A hammer
- A hand broom or industrial vacuum

### **Installation:**

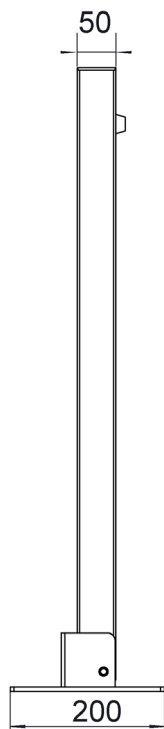
1. Read instruction steps from beginning to end.
2. Determine exactly where the bollard will be placed. If you are installing more than one bollard, it is a good idea to mark the ground to ensure that you have a straight line to assist you with the correct placement of your bollards.
3. Using your hammer drill, drill a guide hole in the surface, through each hole in the bollard using the drill bit. (This is to mark the surface so that you know where to continue to drill).
4. Remove the bollard and brush or vacuum away the dust.
5. Continue to drill each guide hole to almost the entire length of your fixings.
6. If you are using a plastic plug component, put it in the drilled hole and hammer in.
7. Place the bollard over the holes, line up and place your fixing in the holes and screw or hammer in.
8. Use your socket to tighten the screw if applicable. Be careful not to overtighten.



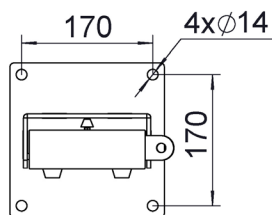
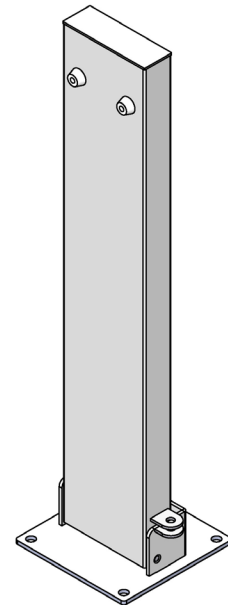
**Technical Drawing**



Front View



Left View



Top View

Fold Down Bollard with Pad Lock			
DATE	PROPORTION		
	1:5		
Measurement in mm		SKU	FDBOL800PAD