



In-Ground Bollard

Specifications	
SKU	BOLBG90
Material	Hot Dip Galvanised Steel
Colour	Powder Coated Yellow with Class 1 Red Reflective Tape
Dimensions:	Diameter: 90mm Height: 1200mm Total (900mm above ground, 300mm below ground) Wall Thickness: 3mm
Item Weight	9kg
Fixings	Anchor rod included at base which can be removed when core drilling into existing concrete or inserted when setting in new concrete.

Tools Required:

- Post hole digger or shovel
- Concrete or concrete mix and water
- Spirit Level
- Shovel
- Measuring Tape
- Trowel

Installation:

1. Determine exactly where the bollard will be placed and mark your installation positions. If you are installing more than one bollard, it is a good idea to mark the ground and use a string line to ensure that you have a straight line to assist you with the correct placement of your bollards.

2. Mark the ground at the centre point of where the bollard will sit. Your aim is to make sure that the centre of the hole is also the centre of the bollard.

3. Dig a hole in the gravel or dirt. The width of your hole should be the diameter of the base of the bollard plus 30mm and the hole should be approximately 300mm deep.

4. Prepare the concrete according to manufacturer's instructions.

5. Place the bollard into the hole and use your level to ensure that it is vertical.

6. It is advisable to place some crushed rock or gravel at the bottom of the hole to act as drainage in the event of water seepage.

7. Shovel the concrete around the base of the bollard, moving the concrete and packing it down around the bollard as you fill the hole to surface level.

8. Ensure the surface of the concrete around the bollard is flat to eliminate any trip hazards by using a trowel to smooth off the surface.

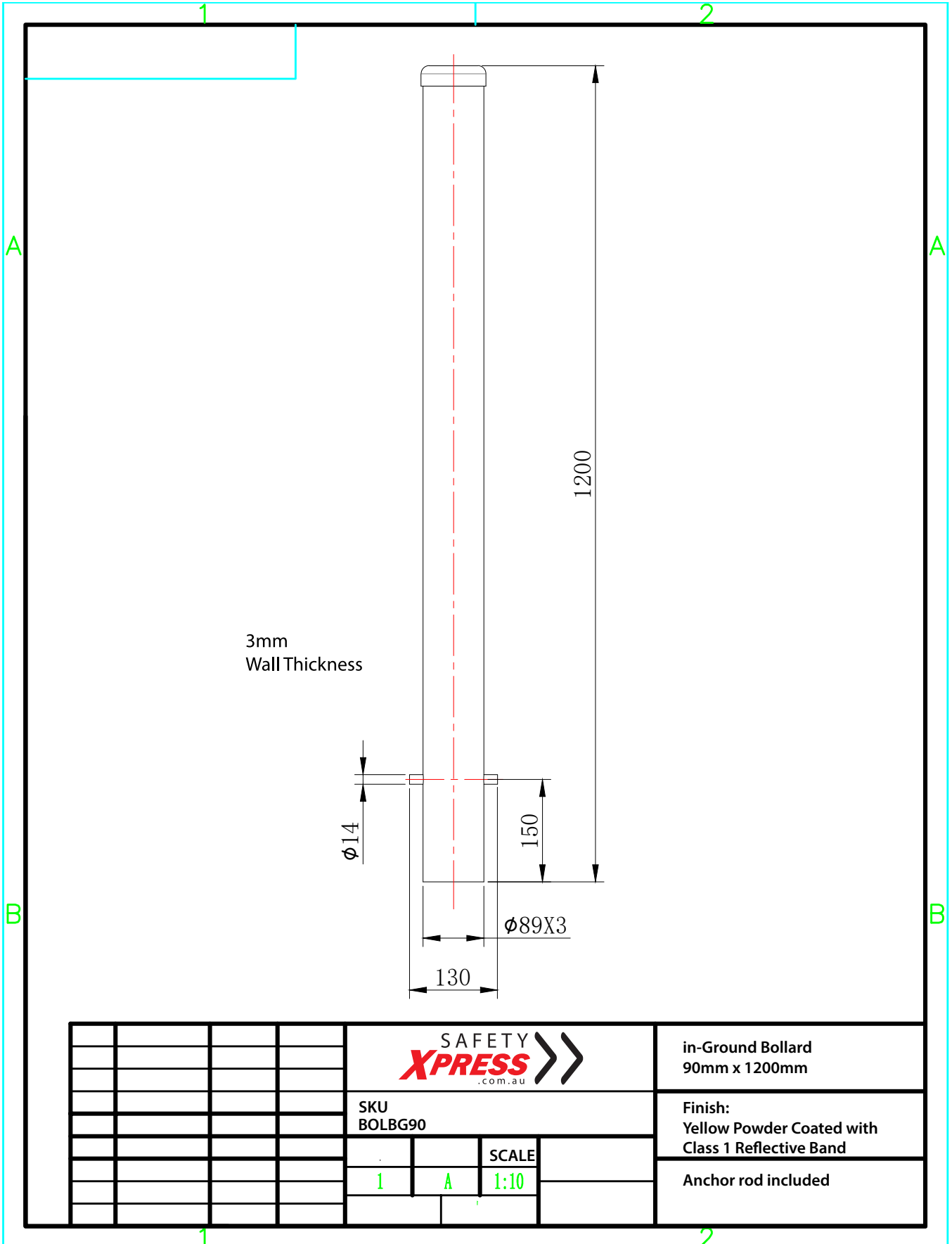
9. Observe the cure time of the concrete, usually 48 hours, to complete the bollard installation. You may want to protect the bollard from interference in this time.

Note: For Installation in Pre-Existing Concrete Surfaces

We highly recommend you engage a professional core driller to complete the installation. Enquire about our installation services



Technical Drawing



						in-Ground Bollard 90mm x 1200mm	
				SKU BOLBG90		Finish: Yellow Powder Coated with Class 1 Reflective Band	
				SCALE		Anchor rod included	
1		A		1:10			

